

**Weekly Ad**

Valid Wed. - Tues.

3/8/2023 -

3/14/2023

**Shop Local**

## KNOW YOUR BUTCHER

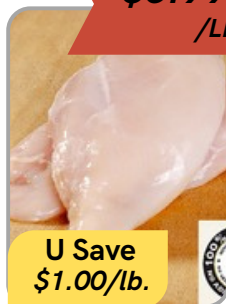
**\$9.99** /LB.



**Corned Beef**

No nitrates/nitrites. Try our traditional New England grey corned beef. Raw. Reg. \$9.99/lb.

**\$6.99** /LB.



**Plain Chicken**

Try your own seasoning on our plain chicken breasts. Raw. Reg. \$7.99/lb.

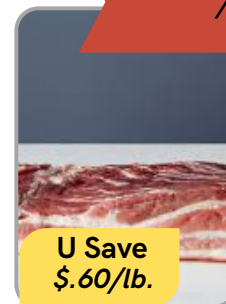
**NEW \$7.99** /LB.



**Wagyu Beef Tallow**

Beef Tallow is excellent for frying, searing meats, and sautéing. Reg. \$7.99/lb.

**\$6.69** /LB.



**Pork Belly**

Before we turn it into bacon we grab some pork belly. Raw. Reg. \$7.29/lb.

**\$10.99** /LB.



**U Save \$2.00/lb.**

**Crispy Brussel Sprouts**

Customers can't get enough of our Crispy Brussel Sprouts. Reg. \$12.99/lb.

**\$12.99** /LB.



**Loaded Potato Salad**

Loaded Potato Salad is a side dish favorite. Reg. \$12.99/lb.

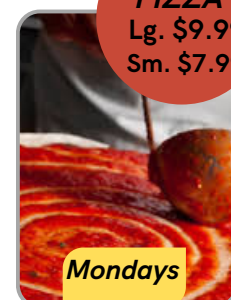
**\$14.00**



**Reuben**

This Reuben is made with our Grey Corned Beef, 1,000 island dressing, sauerkraut on marble rye bread. Reg. \$14.00

**CHEESE PIZZA**  
Lg. \$9.99  
Sm. \$7.99



**Pizza! Pizza!**

Its our dough and our sauce. We think its the best.

**\$2 OFF**



**Tuesdays**

**Burgers**

\$2 Off any of our available Restaurant Burgers.



**SCAN ME**



**703-858-4499**

**SIGN UP FOR OUR EMAIL LIST**



All offers are while supplies last. Not valid with any other offer and excludes alcohol purchases.

Ashburn Store Only

20915 Ashburn, Suite 120 Ashburn VA 20147

[www.wineingbutcher.com](http://www.wineingbutcher.com)